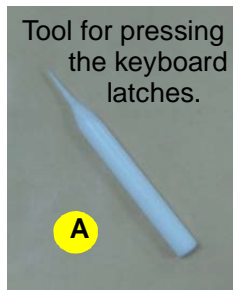


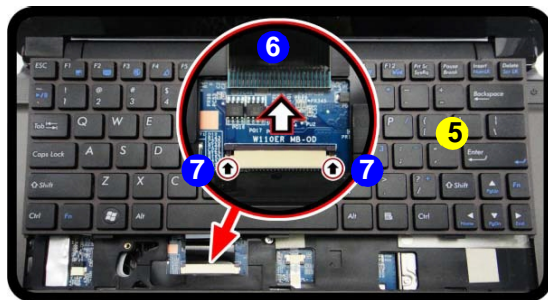
Removing the Keyboard

1. Turn **off** the computer and remove the battery ([page 2 - 5](#)).
2. Use **only** the small tool **A** provided (see picture below) to carefully press the **four** keyboard latches **1** - **4** at the top of the keyboard to elevate the keyboard from its normal position ([Figure 11a](#)).
3. Carefully lift the keyboard **5** up, being careful not to bend the keyboard ribbon cable **6** ([Figure 11b](#)).
4. Disconnect the keyboard ribbon cable **6** from the locking collar socket **7** ([Figure 11b](#)).
5. Carefully lift up the keyboard **5** ([Figure 11c](#)) off the computer.

a.



b.



c.



d.



Keyboard Tabs

Figure 11
Keyboard Removal

- a. Press the four latches to release the keyboard.
- b. Lift the keyboard up and disconnect the cable from the locking collar.
- c. Remove the keyboard.



Re-Inserting the Keyboard

When re-inserting the keyboard, align first the **three** keyboard tabs ([Figure 11d](#)) that are located at the bottom, to the slots in the case.



5. Keyboard