

Removing the Battery

If you are confident in undertaking upgrade procedures yourself, for safety reasons it is best to remove the battery.

1. Turn the computer off, remove the AC/DC adapter and turn it over.
2. Slide the latch **1** - **2** in the direction of the arrow and carefully pull the battery **3** up.
3. Lift the battery **3** up (*Figure b*) and out of the battery bay.

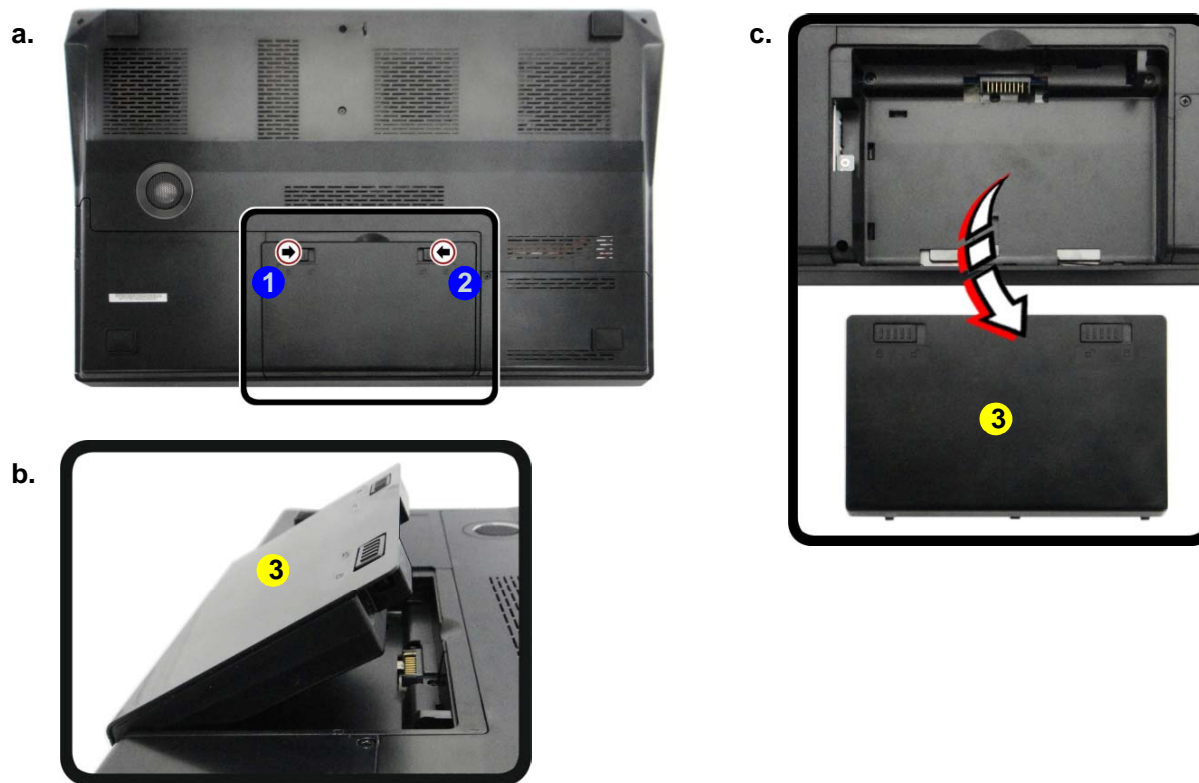
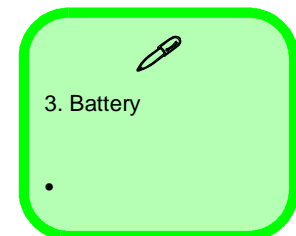


Figure 1
Battery Removal

- a. Slide the latch and hold it in place.
- b. Pull the battery up.
- c. Lift the battery out of the bay as indicated.



Removing the Keyboard

1. Turn off the computer, and turn it over and remove the battery ([page 2 - 5](#)).
2. Turn the computer over, open the Lid/LCD, and carefully unsnap up the center cover module **1** from point **2** (between F11 & F12) using non-metallic instrument.
3. Lift up the center cover module **1**.
4. Remove screws **3** - **7** from the keyboard.
5. Carefully lift the keyboard **8** up, being careful not to bend the keyboard ribbon cable.
6. Disconnect the keyboard ribbon cable **9** from the locking collar socket **10**, and the keyboard LED cable **11** from its locking collar socket **12**.
7. Remove the keyboard **8**.
8. Reverse the process to replace the keyboard (make sure to reconnect the keyboard cable).

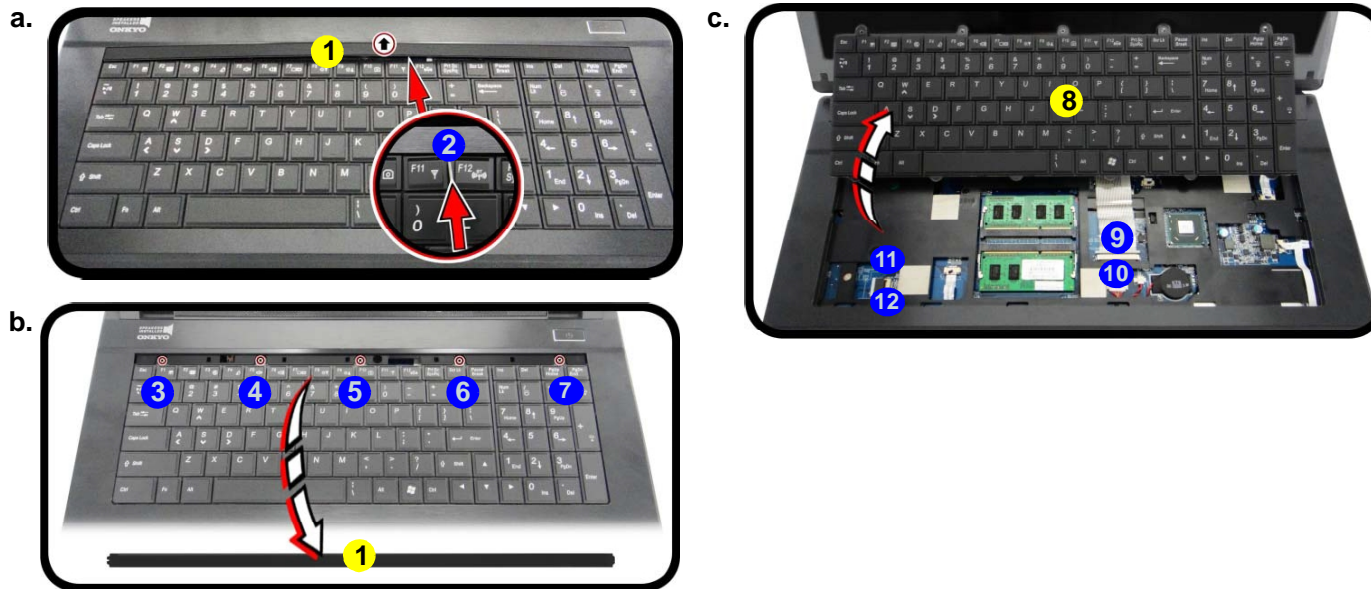



Figure 7
Keyboard Removal

- a. Open the lid/LCD and unsnap the LED cover at point 2.
- b. Lift the LED cover module and remove the screws from the keyboard.
- c. Disconnect the cables from the locking collar.
- d. Remove the keyboard.



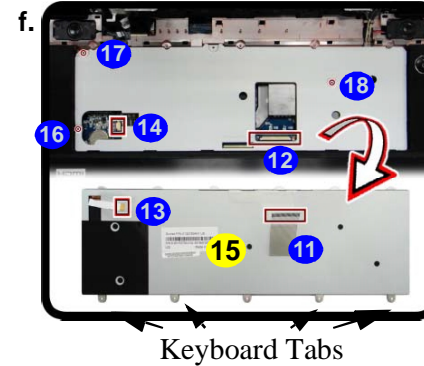
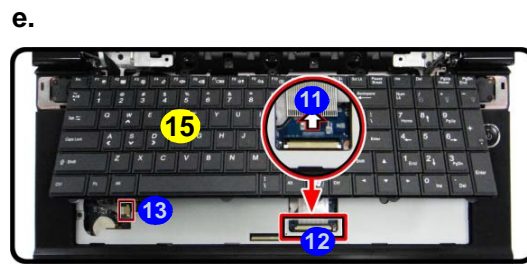
- 1. Center Cover Module
- 8. Keyboard
- 5 Screws

Disassembly

Figure 8
Keyboard Removal
 (cont'd.)

- e. Disconnect the cable from the locking collar.
- f. Remove the keyboard.
- g. Push the center cover on the left side and the slide toward the right to secure it in place.

9. Remove the keyboard **15**, and screws **16** - **18** from the keyboard shielding plate.



Re-Inserting the Keyboard

When re-inserting the keyboard firstly align the **five** keyboard tabs at the bottom (*Figure 8f*) at the bottom of the keyboard with the slots in the case.

10. Reverse the process to replace the keyboard (make sure to reconnect the keyboard cable).
11. Push the center cover module down on the left side at point **19**, and then slide the module to the right (as illustrated) and snap down to secure it in place.
12. Replace the screws on the bottom of the computer.



15. Keyboard

- 3 Screws