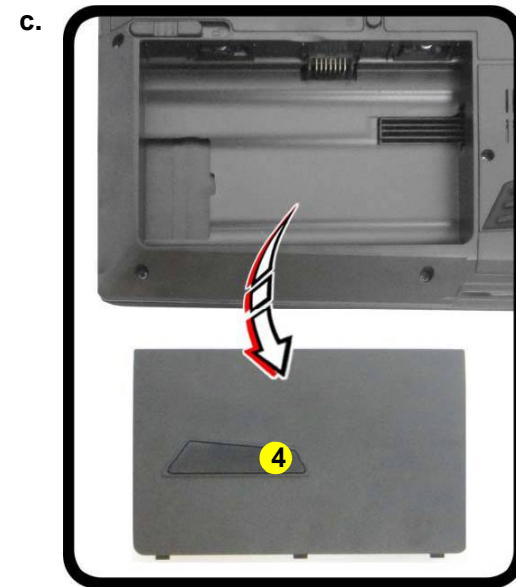
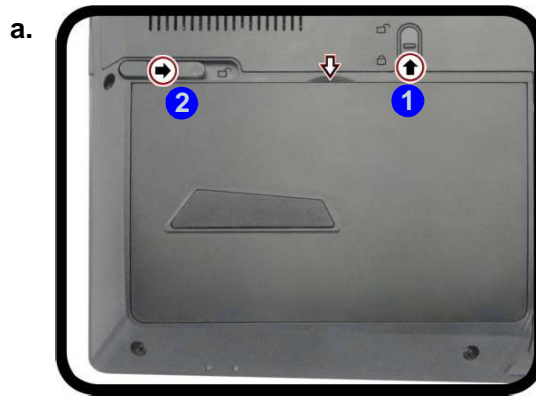


## Disassembly

### Removing the Battery

*Figure 1*  
**Battery Removal**

1. Turn the computer **off**, and turn it over.
  2. Slide the latch **1** in the direction of the arrow (*Figure 1a*).
  3. Slide the latch **2** in the direction of the arrow, and hold it in place (*Figure 1a*).
  4. Lift the battery in the direction of the arrow **3**.
  5. Lift the battery **4** out of the compartment (*Figure 1c*).
- a. Slide the latch and hold in place.
  - b. Lift the battery up toward the direction of the arrow.
  - c. Lift the battery out.



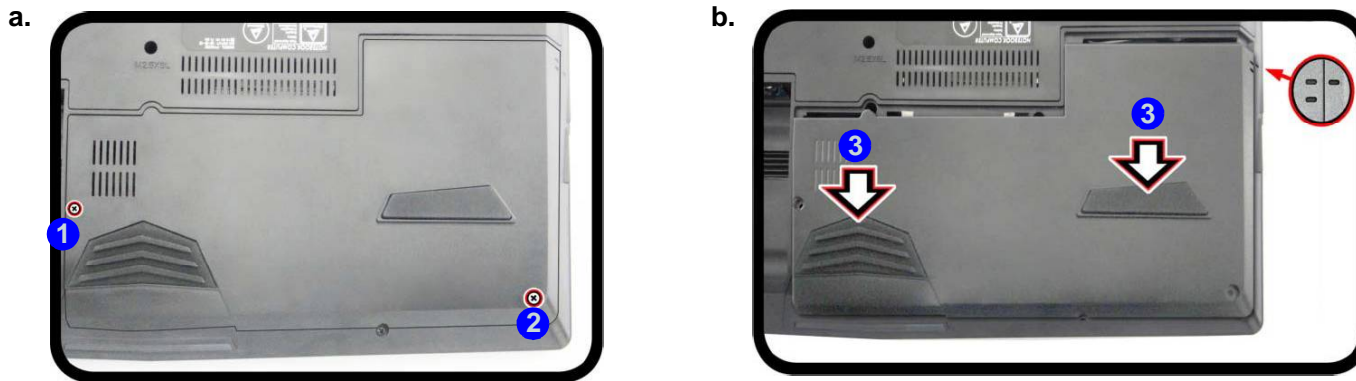
4. Battery

## Removing the Hard Disk Drive

The hard disk drive can be taken out to accommodate other 2.5" serial (SATA) hard disk drives with a height of 7mm/ 9.5mm (h). Follow your operating system's installation instructions, and install all necessary drivers and utilities (as outlined in **Chapter 4 of the User's Manual**) when setting up a new hard disk.

### Hard Disk Upgrade Process

1. Turn **off** the computer, and remove the battery ([page 2 - 6](#)).
2. Locate the hard disk bay cover and remove screws **1** - **2** ([Figure 2a](#)).
3. Remove the hard disk bay cover by sliding the cover at point **3** ([Figure 2b](#)).



*Figure 2*  
**HDD Assembly Removal**

- a. Locate the HDD bay cover and remove the screws.
- b. Remove the hard disk bay cover by sliding the cover at point **3**.



#### HDD System Warning

New HDD's are blank. Before you begin make sure:

You have backed up any data you want to keep from your old HDD.

You have all the CD-ROMs and FDDs required to install your operating system and programs.

If you have access to the internet, download the latest application and hardware driver updates for the operating system you plan to install. Copy these to a removable medium.



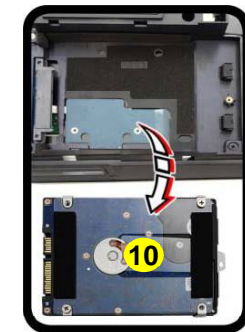
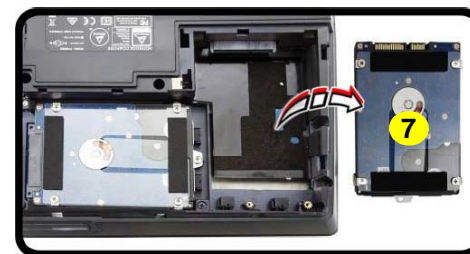
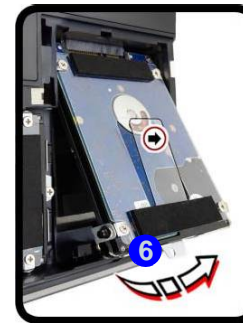
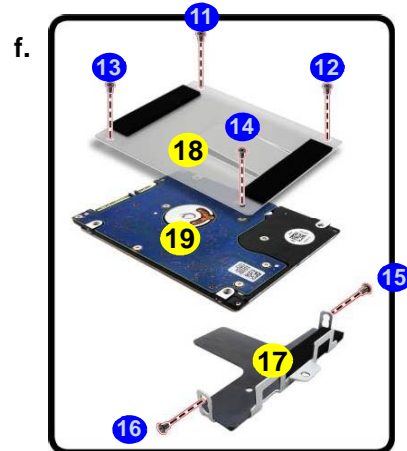
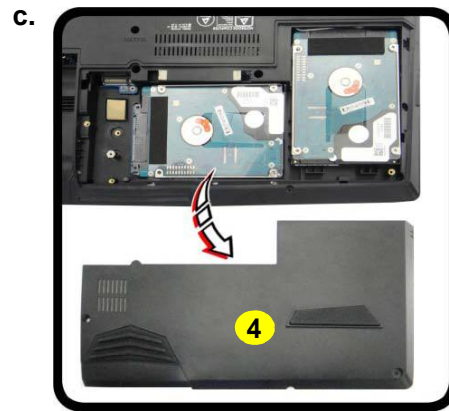
- 2 Screws

## Disassembly

*Figure 3*  
**HDD Assembly  
 Removal (cont'd.)**

- c. Remove the HDD bay cover.
- d. Remove the screw. Lift and pull the HDD-1 assembly in the direction of the arrow to remove the hard disk assembly.
- e. Remove the screw. Lift and pull the HDD-2 assembly in the direction of the arrow to remove the hard disk assembly.
- f. Remove the screws, hdd bracket and adhesive cover.

4. Lift the hard disk bay cover **4** off the computer (*Figure 3c*)
5. Remove the screw **5**. Slightly lift and pull the HDD-1 assembly in the direction of the arrow **6** to remove the hard disk assembly **7** (*Figure 3d*).
6. Remove the screw **8**. Slightly lift and pull the HDD-2 assembly (if available) in the direction of the arrow **9** to remove the hard disk assembly **10** (*Figure 3e*).
7. Remove screws **11** - **16**, HDD bracket **17** and the adhesive cover **18** from the hard disk **19** (*Figure 3f*).
8. Reverse the process to install a new hard disk (do not forget to replace all the screws and covers).

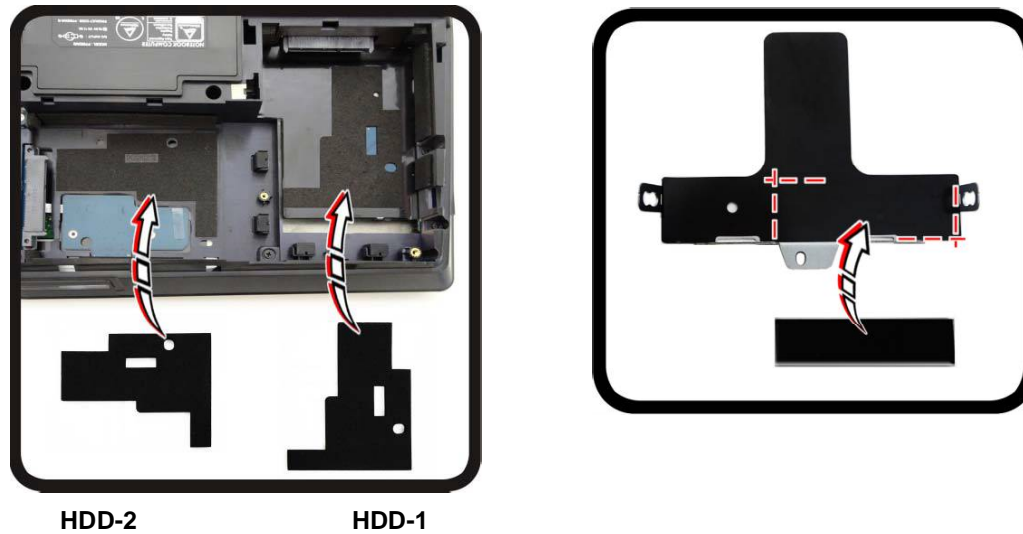


- 4. HDD Bay Cover
- 7. HDD-1 Assembly
- 10. HDD-2 Assembly
- 17. Adhesive Cover
- 18. HDD Bracket
- 19. HDD

- 8 Screws

**Hard Disk Size Note (Foam Rubber Insert)**

Note that the hard disks pictured on the following pages are all 9.5mm(H) hard disk drives. In some cases 7mm(H) hard disk drives will be installed.



*Figure 4*  
**Foam Rubber  
Insert for 7mm(H)  
HDDs**

- If you are replacing a 9.5mm(H) HDD with a 7mm(H) HDD then insert the foam rubber insert.
- If you are replacing a 7mm(H) HDD with a 9.5mm(H) HDD then remove the foam rubber insert.

## Disassembly

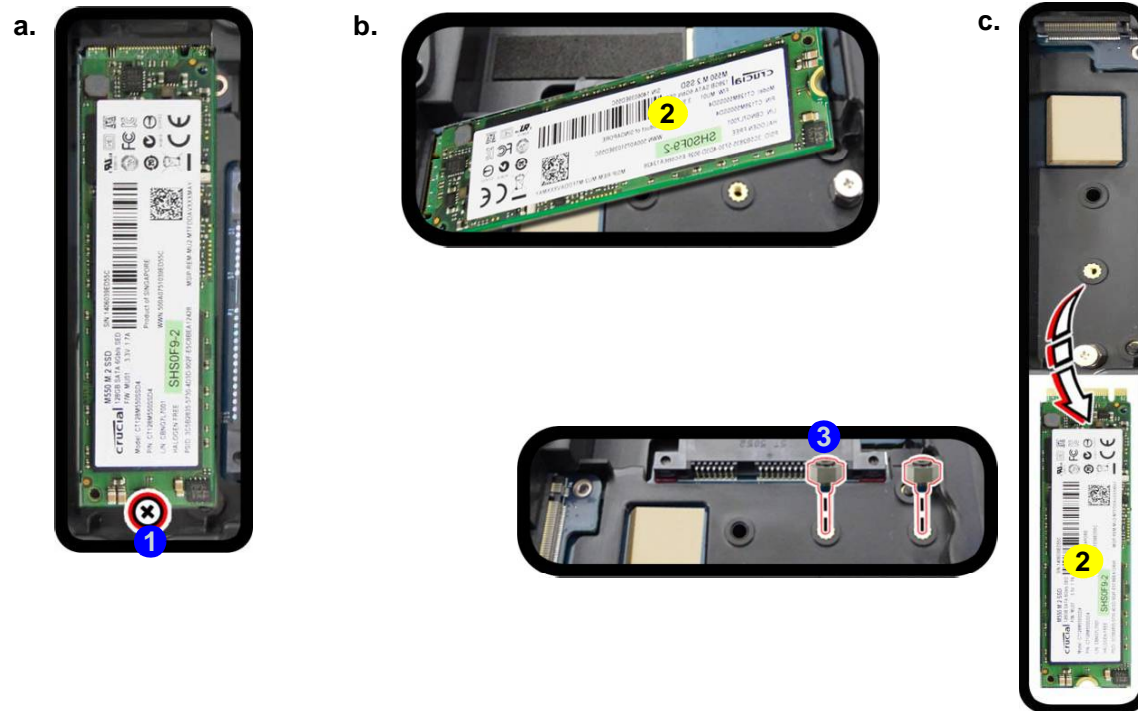
### Figure 5 M.2 SSD Module Removal

- Remove the screws.
- The SSD module will pop up.
- Lift the SSD module out.

## Removing the M.2 SSD Module

Note that the SSD (if installed) is beside the HDD bay.

- Turn **off** the computer, and turn it over, remove the battery ([page 2 - 6](#)).
- Remove the screw **1** from the SSD ([Figure 5a](#)).
- The SSD module **2** will pop-up ([Figure 5b](#)).
- Lift the SSD module **2** up and off the computer ([Figure 5c](#)).
- Reverse the process to install a new SSD (make sure that the hexagonal screw **3** is in the correct location depending upon the size of the module).



2. SSD Module

- 1 Screw

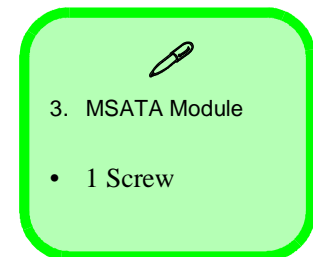
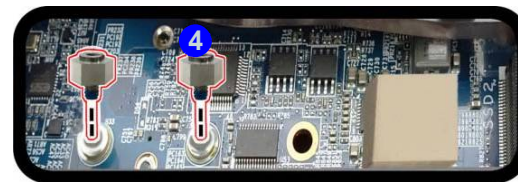
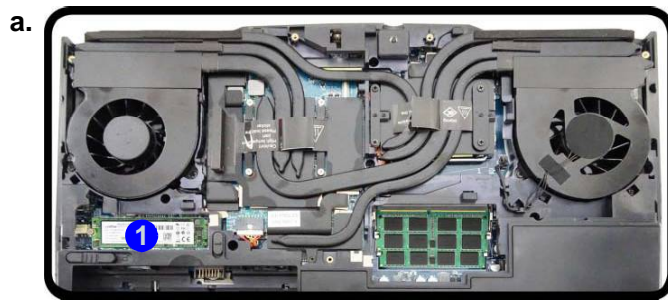


## Removing the M.2 SATA Module

1. Turn **off** the computer, remove the battery ([page 2 - 6](#)), and component bay cover ([page 2 - 11](#)).
2. Locate the module; it is visible at point **1** ([Figure 15a](#)).
3. Carefully remove the screw **2** from the module ([Figure 15b](#)).
4. The MSATA module **3** will pop-up ([Figure 15c](#)).
5. Lift the MSATA module **3** up and off the computer ([Figure 15d](#)).
6. Reverse the process to install a new SSD (make sure that the hexagonal screw **4** is in the correct location).

*Figure 15*  
**M.2 SATA Module Removal**

- a. Locate the module.
- b. Remove the screw.
- c. The module will pop-up.
- d. Lift the module up off the socket.



## Disassembly

*Figure 16*  
**M.2 SATA Module Installation**

- Place the thermal pad.
- Insert the module.
- Tighten the screw.

### M.2 SATA Installation Procedure

- Place the thermal pad **1** on the computer as shown (*Figure 16a*).
- Insert the module **2** in the computer. Make sure that the hexagonal screw **3** is in the correct location (*Figure 16b*).
- Tighten the screw **4** to secure it in place (*Figure 16c*).



- Thermal Pad
- M.2 SATA Module

- 1 Screw



#### Thermal Pad

Make sure you place the thermal pad's adhesive side down onto the computer surface as illustrated.

The usage of the thermal pad will depend upon the thickness of the module being used.

- If you are using the thinner module, then apply the whole thermal pad provided on the computer.
- If you are using the thicker module, separate the pad into its two parts. Use the larger part and place the adhesive side onto the computer (discard the smaller part that you have separated).

