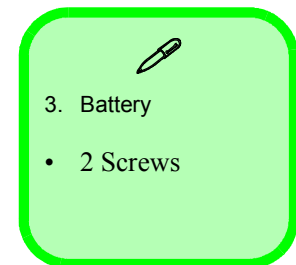
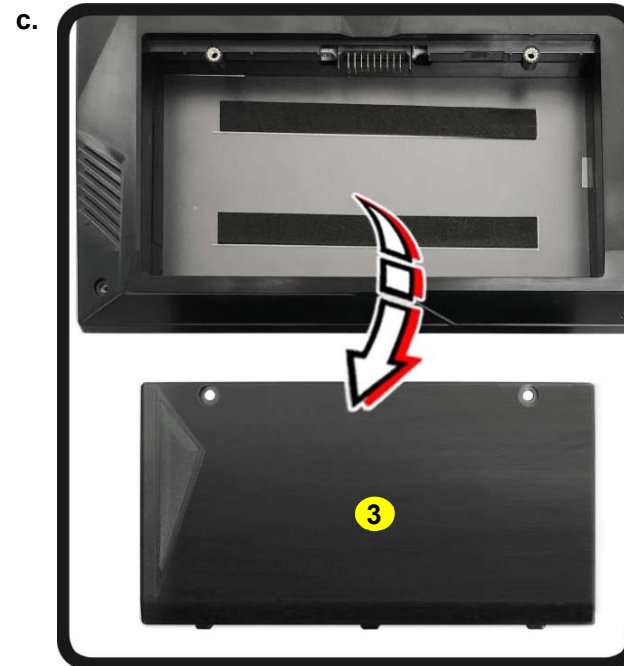
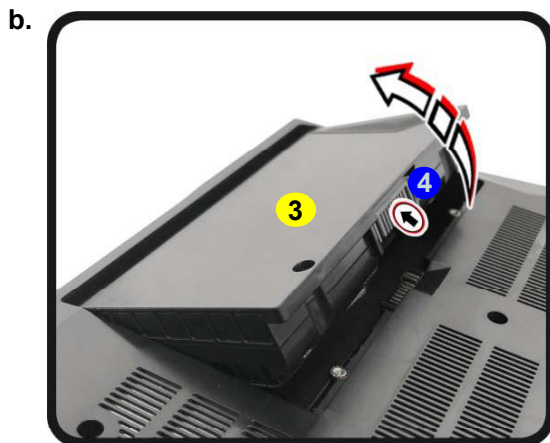
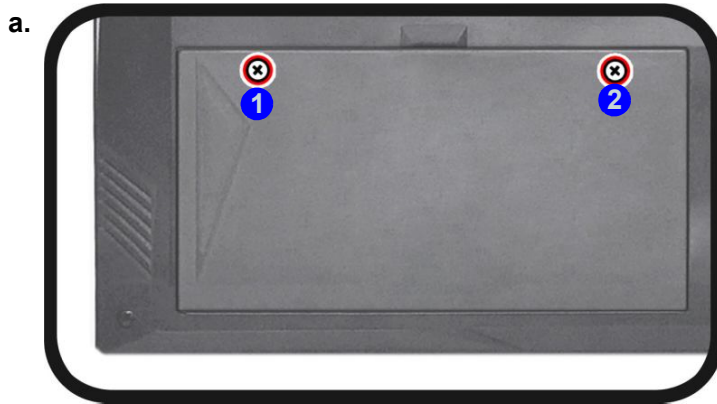


## Removing the Battery

1. Turn **off** the computer, turn it over.
2. Remove screws **1** - **2** (*Figure 1a*).
3. Carefully lift the battery **3** up in the direction of the arrow at point **4** (*Figure 1b*).
4. Remove the battery **3** off the computer (*Figure 1c*).
5. Reverse the process to install a new battery (do not forget to replace all the screws and bottom cover).

*Figure 1*  
**Battery Removal**

- a. Remove the screws.
- b. Lift the battery up.
- c. Remove the battery.



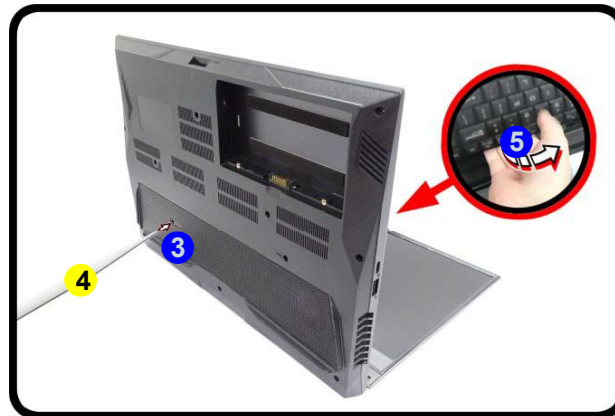
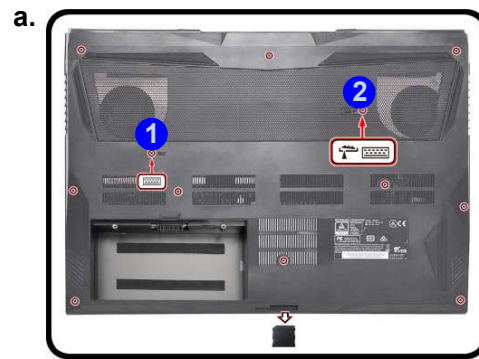
## Disassembly

Figure 2  
Keyboard Removal

- Remove the screws from the bottom of the computer and then eject the keyboard using a special eject stick to push the keyboard out while releasing the keyboard as shown.
- Lift the keyboard up and disconnect the keyboard ribbon cable from the locking collar socket.
- Remove the keyboard.

## Removing the Keyboard

- Turn **off** the computer, remove the battery ([page 2 - 5](#)).
- Remove screws **1** - **2** from the bottom of the computer.
- Open it up with the LCD on a flat surface before pressing at point **3** to release the keyboard module (use the special eject stick **4** to do this) while releasing the keyboard in the direction of the arrow **5** as shown ([Figure 2a](#)).
- Carefully lift the keyboard **6** up, being careful not to bend the keyboard ribbon cable **7**. Disconnect the keyboard ribbon cable **7** from the locking collar socket by using a flat-head screwdriver to pry the locking collar pins **8** away from the base ([Figure 2b](#)).
- Carefully lift the keyboard **6** off the computer ([Figure 2c](#)).



### Re-inserting the Keyboard

When re-inserting the keyboard firstly, align the keyboard tabs at the bottom of the keyboard with the slots in the case.



4. Eject Stick  
6. Keyboard

- 2 Screws