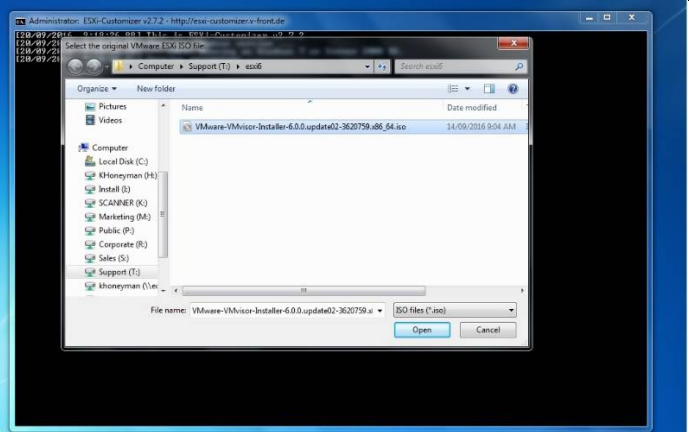
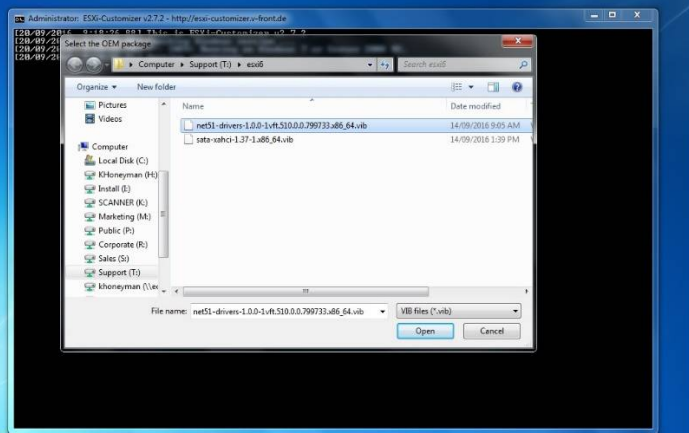


How to inject drivers using ESXI Customizer

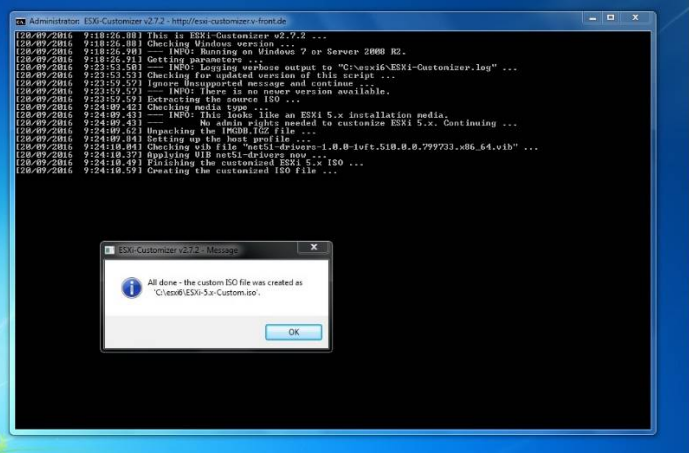
1. After opening esxi customizer, select the original ISO file.



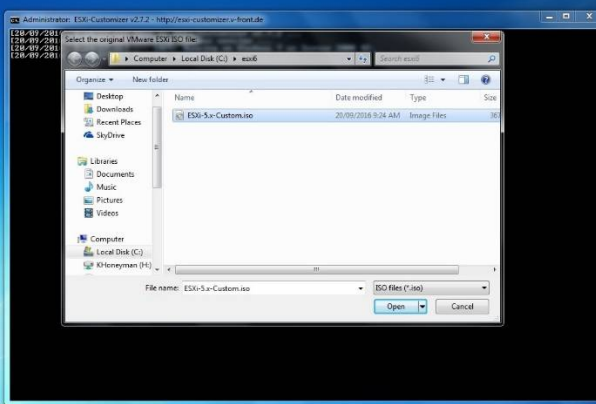
2. Select the VIB for the driver you wish to inject
http://downloads.eurocom.com/support/drivers/zip/270/P5_Esxi.zip



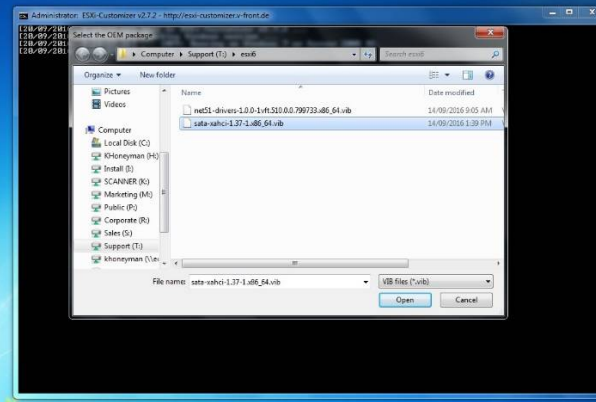
3. Select the working directory, and the press RUN, it will inject the drivers



4. To inject an additional driver, select the custom ISO you just made



5. Select the VIB driver file



Select RUN and inject the driver

