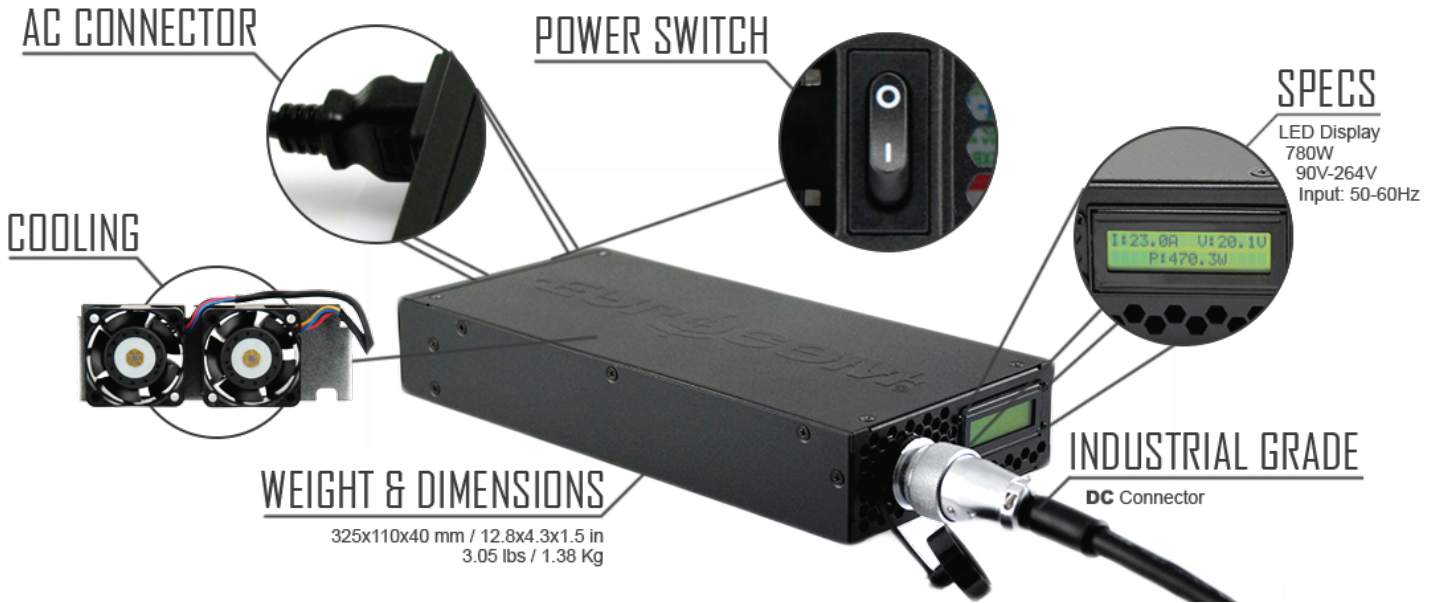


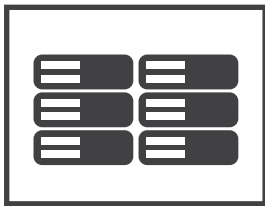
780W AC/DC Adapter



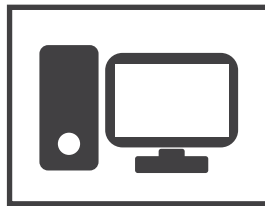
Laptop - Server – Workstation - Small Form Factor PC - Industrial PC



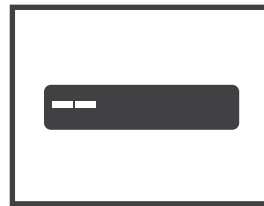
LAPTOPS



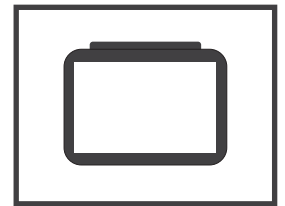
SERVERS



WORKSTATIONS



SMALL FORM
FACTOR PC



INDUSTRIAL PC

The EUROCOM 780W AC/DC adapter/power supply brings an unprecedented level of mobile power to owners of high-performance laptops and overclockers who require more power than has been available before this innovative solution.

This auto-switching AC adapter, weighing only 3lbs, is also ideal for Small Form Factor PCs, Industrial PCs and Servers, that require a high efficiency, rugged external power supply with detachable AC and DC cables and LED power draw read out.



SPEC HIGHLIGHTS

PHYSICAL CHARACTERISTICS	<u>AC ADAPTER:</u>
	12.8" / 325mm Length
	4.3" / 110mm Width
	1.5" / 40mm Height
	Total weight: 3.05 lbs / 1.38 kg
	<u>DC CABLE:</u>
	72.9" / 1854mm Cable Length
	Total weight: 0.85 lbs / 0.38 kg
RATED OUTPUT POWER	780W
VOLTAGE	90Vac to 264Vac
FREQUENCY	50-60Hz
INPUT CURRENT	10A at AC Input 100Vac/60Hz.
INRUSH CURRENT	The inrush current will not exceed 100A at 230Vac/63Hz AC input for a cold start at 25C
POWER FACTOR	The Power supply power factor at full load operation shall be more than 0.9 at 230Vac input.
EFFICIENCY	The efficiency (watts out / watts in) is higher than 90% typically while measuring at nominal line and maximum load.
OUTPUT REQUIREMENTS	Output voltage: 20Vdc Minimum Load: 0A Maximum Load: 39A Peak Load: 45A (duration Time 25ms) Line Regulation: 2% Load Regulation: +- 5% Voltage Accuracy: Min 19V Max 21V Ripple & Noise(*) 200mVp-p